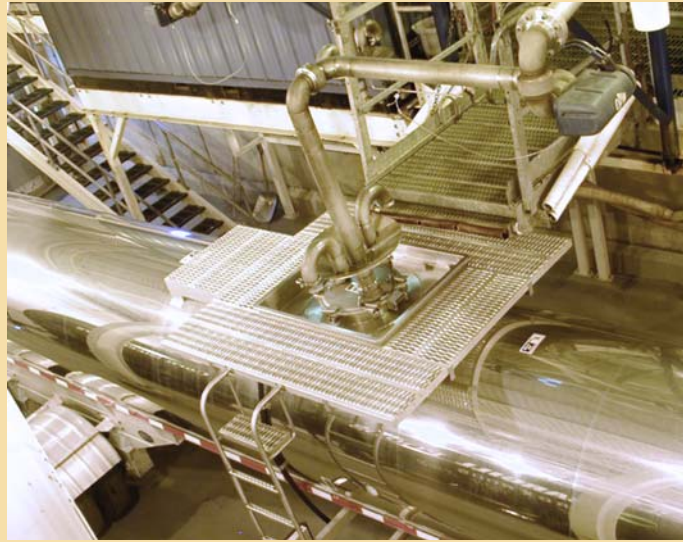




*At Mann Lake, we believe  
in earning your business!*

Mann Lake Ltd.  
501 1st Street S  
Hackensack MN 56452-2589  
800-233-6663



*Your syrup will be delivered on  
time, when you want it.*

Washington: Seattle  
Selah

Minnesota:  
Hackensack

Massachusetts:  
Worcester

Ohio: Clyde

Kentucky:  
Clarkson

Maryland:  
Elkton

West Virginia:  
Westin

Alabama:  
Decatur

Florida: Medley  
Tampa

Texas: Arlington  
Dimmit  
Fort Worth  
Houston  
McAllen

Oklahoma: Noble

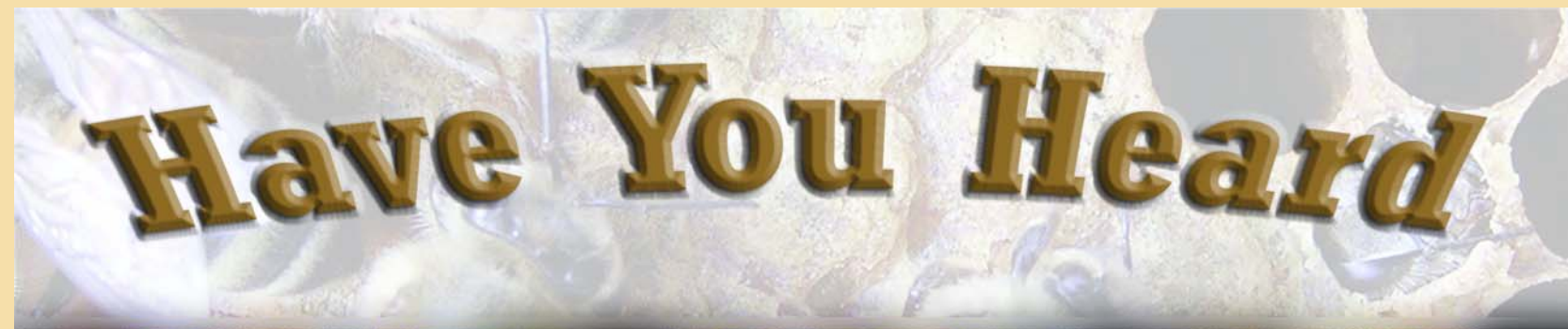
Utah: Clearfield

California: Woodland  
Lynwood  
Stockton

**Convenient  
Pickup  
Locations**

Mann Lake Ltd.  
501 1st Street South  
Hackensack MN 56452-2589

[www.mannlakeltd.com](http://www.mannlakeltd.com)  
[beekeeper@mannlakeltd.com](mailto:beekeeper@mannlakeltd.com)  
800-233-6663



# ProSweet Liquid Sugar Blend

Now you can have the advantage of feeding ProSweet no matter where your bees are!

## The Power of Pro-Sweet, Liquid Sugar Blend!

- Builds bees faster.
- High solid content, 77%+ or 71%
- Extremely stable - resists crystallization and fermentation.
- Contains both monomial & binomial sugars.
- Delivery available 7 days a week.
- Pro-Sweet is affordable!



### *Awesome feed, the best of both worlds!*

- Very stable, resists granulation.
- Resistant to microbial growth and fermentation.
- High solid content and calorie count.

#### **Pro-Sweet 77 Liquid Sugar Blend**

Total Solids (%)	76.50 - 77.50
Typical Carbohydrate Components	
Fructose (DSB*)	21%
Dextrose (DSB*)	26%
Sucrose (DSB*)	50%
pH 3.8 - 4.2	
Pounds per gallon 11.55	

#### **Pro-Sweet 71 Liquid Sugar Blend**

Total Solids (%)	71.00
Typical Carbohydrate Components	
Fructose (DSB*)	27%
Dextrose (DSB*)	21%
Sucrose (DSB*)	50%
pH 4	
Pounds per gallon 11.20	



# Liquid Sugar Ø Sucrose

## Why get your syrup from Mann Lake?

- Our friendly staff makes all the difference.
- Delivery is available within 24 - 48 hours across North America.
- Syrup is delivered on time, when you want it.
- Our phones are answered 24 hours a day by a real person.

#### **Ø Sucrose Liquid Sugar 2-1 Mix of 66.7% Solids Will not granulate!**

Total Solids (%)	67%
Moisture (%)	33%
Ash	.025
Sulfur Dioxide	1-4 ppm max
Typical Carbohydrate Components	
Sucrose (DSB*)	100%

#### **IsoClear® 55**

Total Solids (%)	77.00
Moisture (%)	23.00
pH (undiluted)	4.00
Pounds/Gallon (100°)	11.46
Pounds/Gallon (DSB*)	8.89
Fructose (DSB*)	55%
Dextrose (DSB*)	41%
Maltose(DSB*)	2%
Higher Saccharides (DSB*)	2%

Call Now For  
The BEST Prices!



#### **IsoClear® 42**

Total Solids (%)	71.00
Moisture (%)	29.00
pH (undiluted)	4.00
Pounds/Gallon (100°)	11.24
Pounds/Gallon (DSB*)	7.98
Fructose (DSB*)	42%
Dextrose (DSB*)	52%
Maltose(DSB*)	3%
Higher Saccharides (DSB*)	3%

\*Dry Solid Basis

**Mann Lake Ltd.**  
**800-233-6663**