

Put an approved pesticide in the hive according to the pesticide label instructions.

Remove the trap after 24 hours. Leaving the trap longer than 24 hours will result in a heavy buildup of hive debris making it difficult to count the mites.

Mark the trap with the date.

Cover the sticky surface with clear plastic wrap.

Count the varroa mites on the trap.

In the spring...

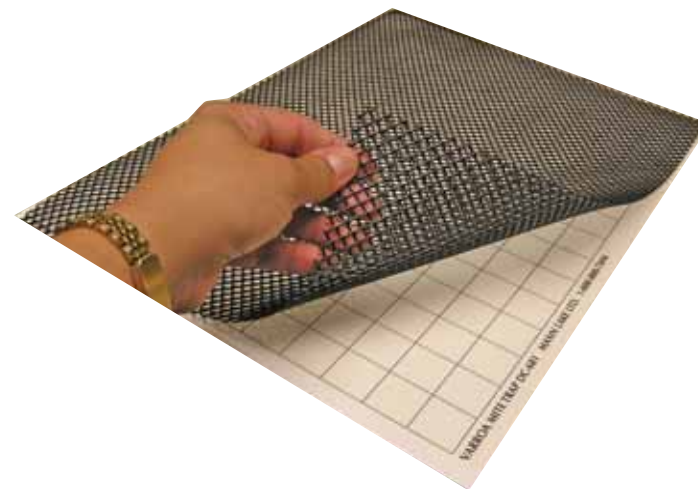
- If no mites are detected, remove the pesticide and test again in the fall.
- If mite levels are low (less than 100) treatment can be delayed until fall.
- If mite levels are moderate (between 100-1,000) remove any honey supers and treat as soon as possible.
- If mite levels are high (over 1,000) remove any honey supers and begin treatment immediately.

In the fall...

- If any mites are detected, treat immediately.

**800-880-7694**

## DC-680 Sticky Board With Screen DC-681 Replacement Sticky Board



**Mann Lake Ltd.**

**800-880-7694**

**[www.mannlakeltd.com](http://www.mannlakeltd.com)**

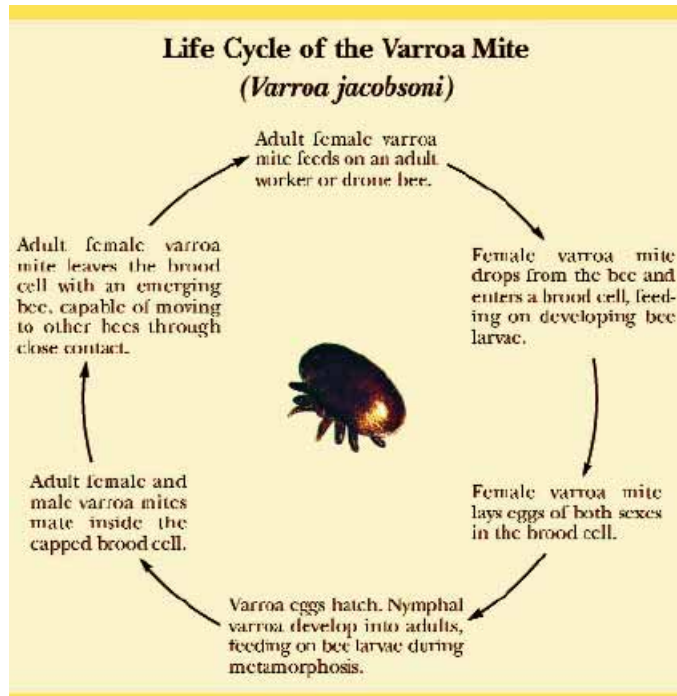
## Why Sample?

Decisions on Varroa Mite control are based on the number of mites found on the trap.

If mites are detected at low levels or not at all, treatment may be delayed or not required resulting in fewer chemicals being applied in the hive, reduced chance of mites becoming resistant to the treatment chemicals and it saves money.

If mites are present at low to moderate levels treatment can be made so that honey production is maintained, over-wintered colony losses are diminished.

Sampling is best done in times of low brood rearing.



Decisions on Varroa Mite control are generally based on the mite count taken from the Sticky Board. If mites are not detected or are found at very low levels, treatment will not be required or may be delayed. If mites are present at moderate to high levels, control measures can be initiated so that honey production can be maintained, colony losses over winter due to Varroa can be curtailed and most of all colony death is avoided.

Use the Sticky Board to sample at least 10% of hives in large apiaries or a minimum of 3 hives in smaller ones. Choose unusually large and small colonies and those at row ends.

When to use: Varroa mite detection is best during periods of low brood rearing.

Storage: Store Sticky Boards in cool conditions in the bag provided.

Directions: Bring Sticky Boards to room temperature. Start at the unglued margin and carefully peel off the paper. In the field, ensure traps remain warm until paper is removed.

Record on the Sticky Board the hive number and the date you are inserting it. If you are using a standard bottom board or pallet, place the screen over the sticky surface to keep the bees from sticking to the surface. Slide the unit through the entrance of the hive on the bottom board. Use thumb tacks if desired to keep the trap flat.