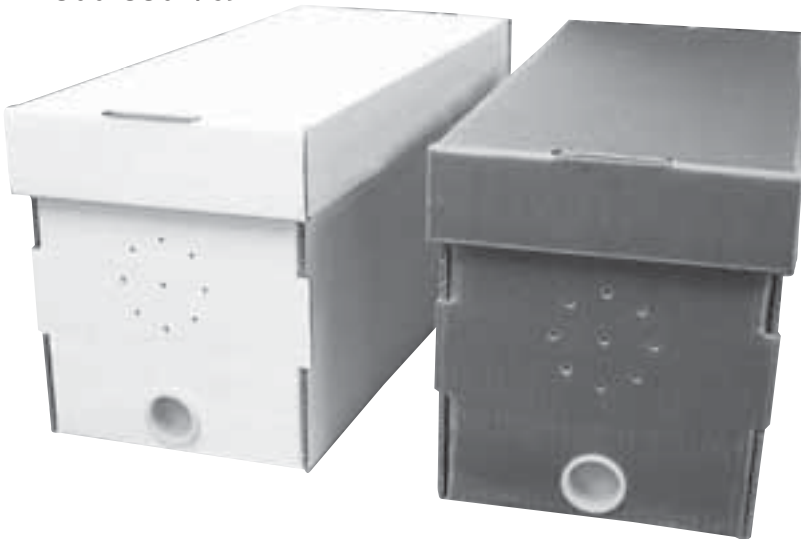


How To Assemble Your New Corrugated Cardboard Nuc Box.

NB-200 & NB-250

Mann Lake Ltd.
800-880-7694



CAUTION!:

Brown Nuc Boxes absorb heat. If in high temperatures and/or in direct sunligh heat levels may excces safe temperatures.

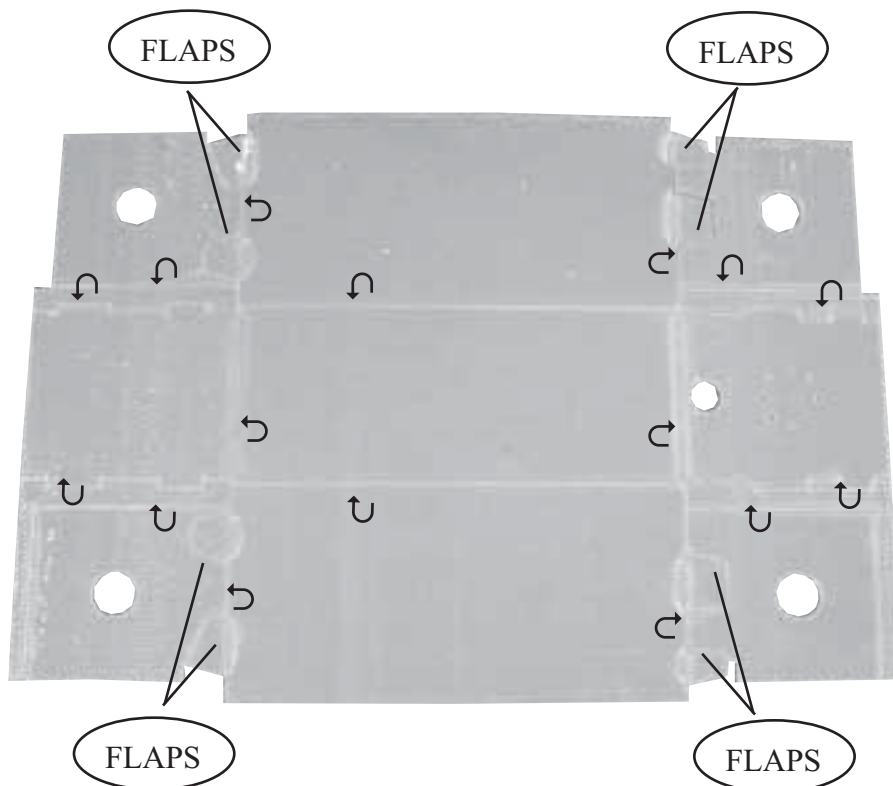


WARNING:

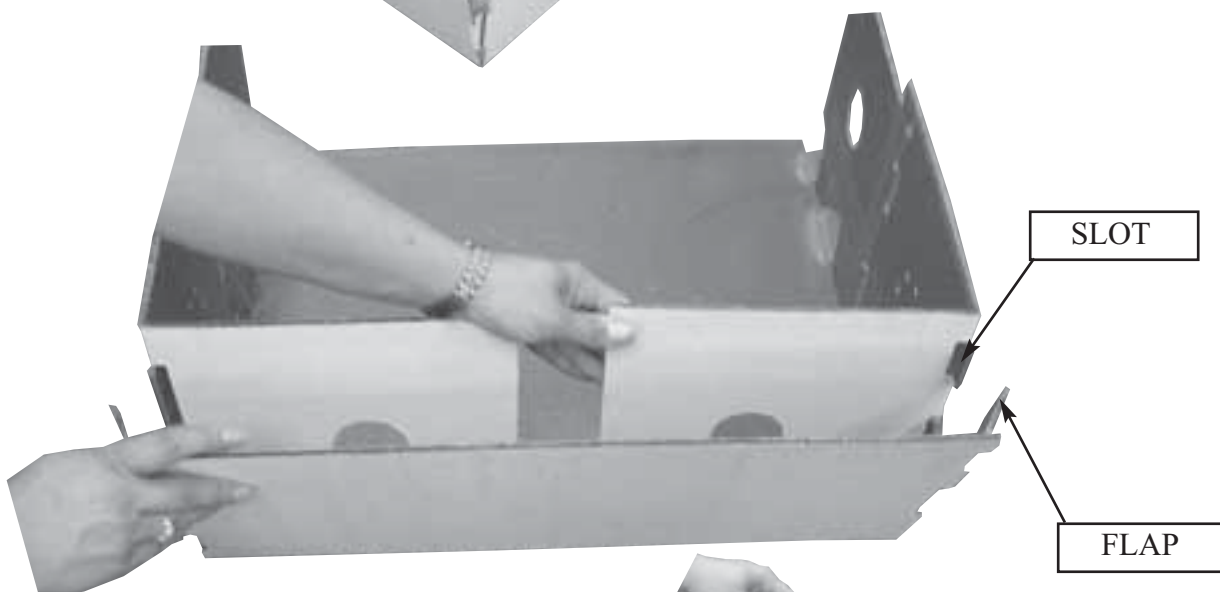
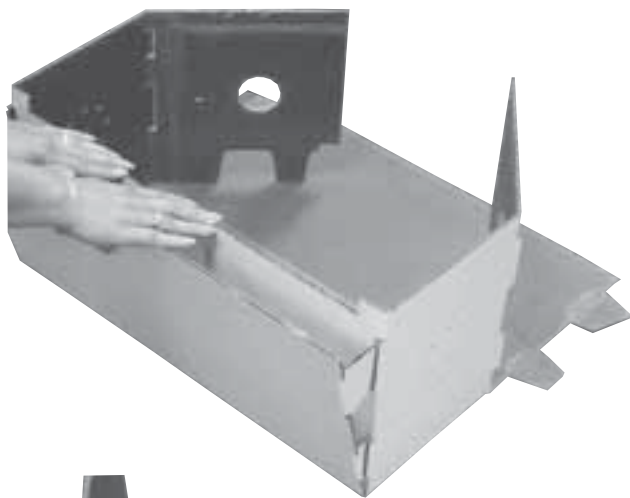
If you do not fold the box the appropriate way it will tear. Start by finding the indented line side and place face up.

Your nuc box comes as a flat component. Begin by prefolding all flaps and scores.

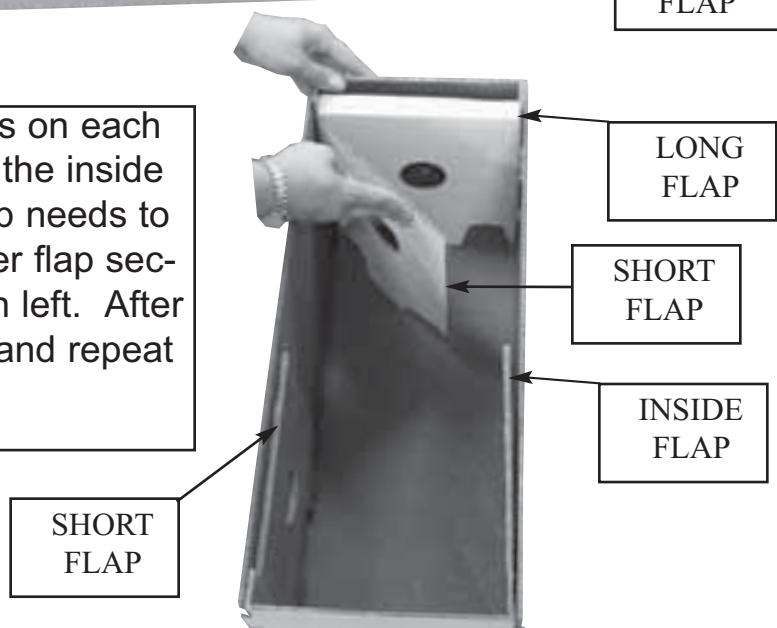
↪ SYMBOL INDICATES FOLD OR SCORE LINE.



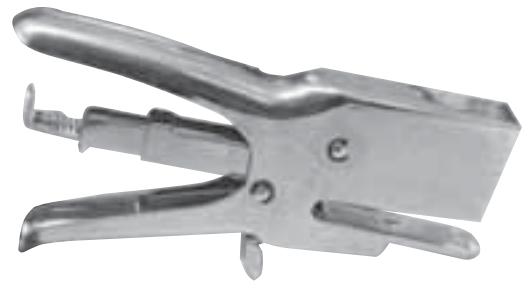
Pull up both ends of the nuc box as shown in picture below. Next bring up one side. Insert flaps on sides into designated slots on end piece one side at a time. Do not lock the sides into place until flaps are inserted on both ends. Turn around and repeat the process.



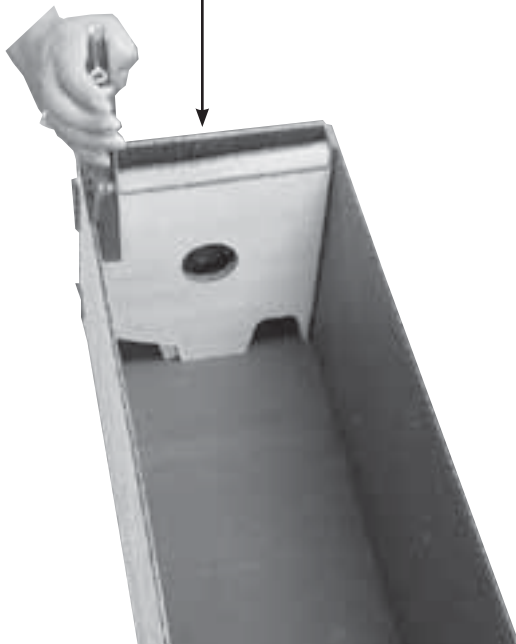
There are two sets of inside flaps on each end. Start on one end and find the inside flap that is longer. The longer flap needs to be folded over first and the shorter flap second as demonstrated in picture on left. After folding one end turn box around and repeat process.



The type of stapler you will need to finish assembling your nuc box is pictured on the right.



Each nuc box will require 6 staples. Staple the attached inside flap at the outside edge. You will need one staple for each end. Just staple the flaps together do not staple the flaps to the out side of the box.



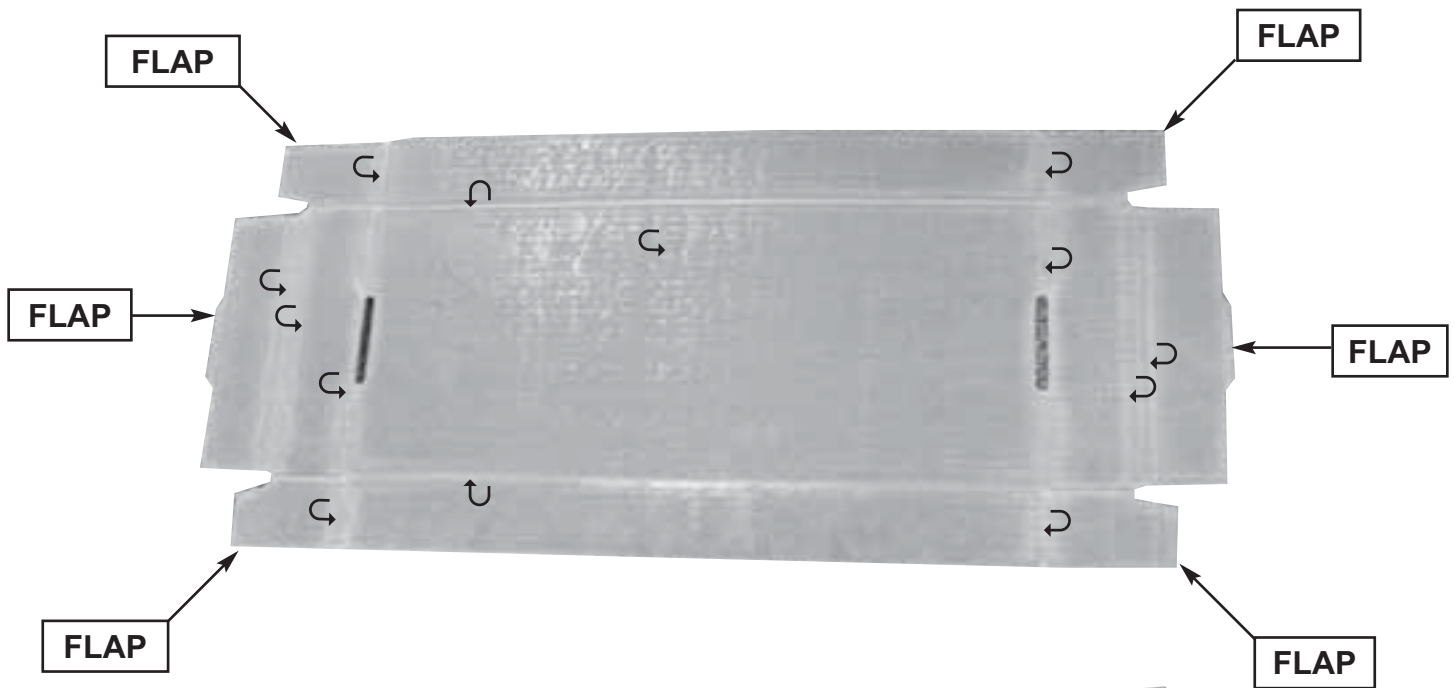
Arrows indicate where staples need to be attached.

Each corner will require 1 staple. Attach a staple to the top outside corner in the gap on the end of the box.

NUC BOX COVER

Your nuc box lid comes as a flat component. Begin by prefolding all flaps and scores.

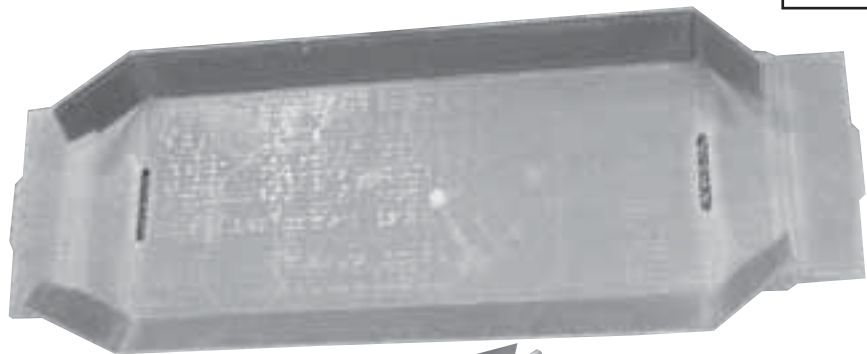
↪ SYMBOL INDICATES FOLD OR SCORE LINE.



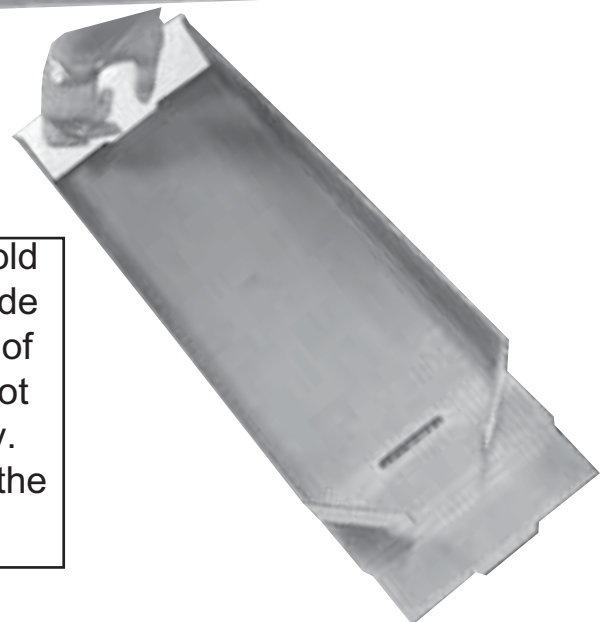
WARNING

If you do not fold the lid the appropriate way it will tear.

Start by folding up both sides of the cover as seen in picture below. Fold flaps on side like picture on right.



Start on one end and fold the end flap over the side flaps and push tongue of end flap through the slot on the end of lid firmly. Repeat the process on the other end of lid.



Mann Lake Ltd.
800-880-7694