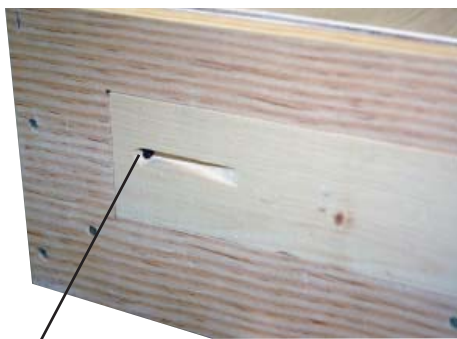


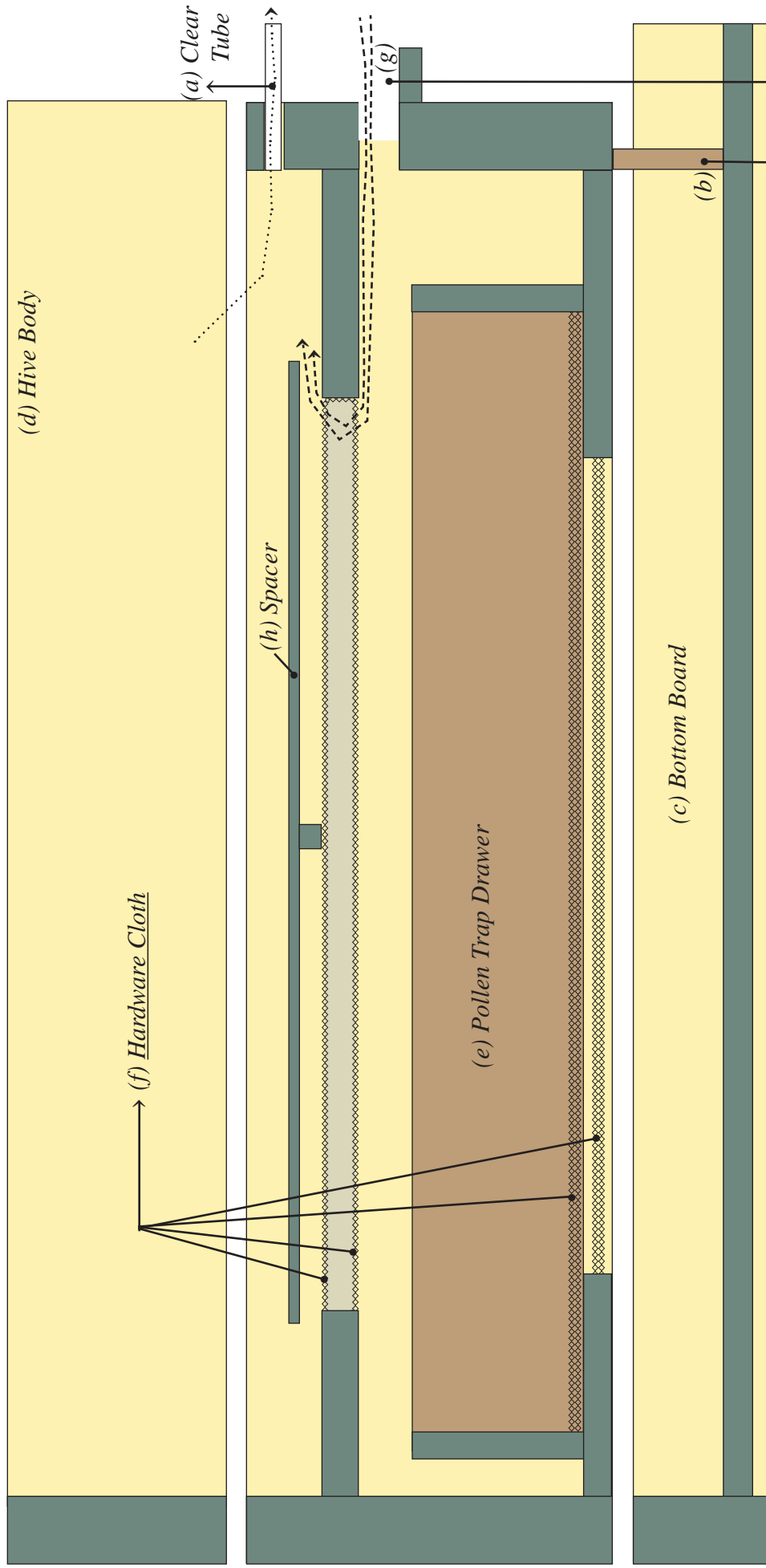
Superior Pollen Trap WW-215



Simply remove the screw and board to switch which side the drawer is on. Replace the screw and board onto the other side.



800-880-7694



- > Bees entering hive thru the pollen trap entrance
-> Bees exiting hive thru the clear tubes (a)

- (b) Close Off Old
Hive Entrance
- (g) Pollen Trap Entrance

When installing the pollen trap for normal pollen collection, install the four clear tubes in holes. The tubes should be flush to the inside walls of the pollen trap. Take your hive body from bottom board and install pollen trap on it. Install your hive back on top of the pollen trap. It is possible to install it on a two hive pallet using our Spacer Rim (WW-295). Close off the old entrance with an entrance reducer. Place the spacer over the screen, making sure the flat part of the spacer is facing up. The spacer will help to keep debris from the hive from falling into the pollen trap.

To allow the bees to collect their own pollen remove the clear tubes. This will allow the bees to enter the hive through the holes.

Mann Lake Ltd.
800-880-7694