

USER MANUAL

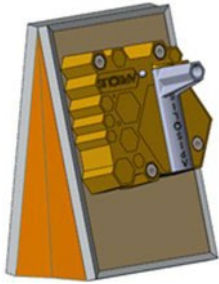


Please consult this manual before use.

We would like to thank you for choosing Apisolis, the smoker to inspect your hives differently and serenely. This manual has been designed to ensure the correct usage and maintenance of this appliance. For any questions not mentioned here: please contact customer service by email, sav@apisolis.com.

Section I : Safety Precautions

1. Transportation and storage



Spout up position

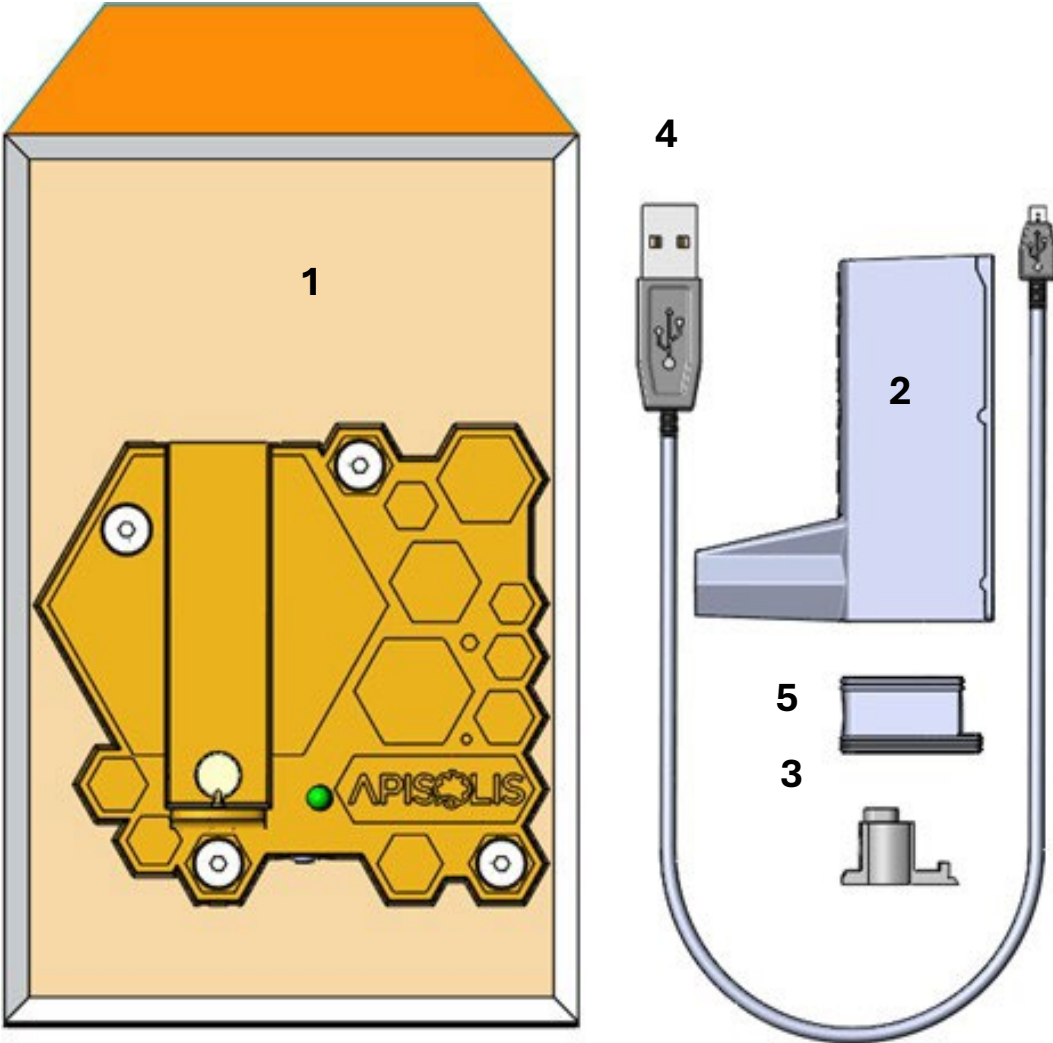
- Apisolis must be stored with the spout up (see figure).
- During transportation, make sure that Apisolis is not in contact with other objects that could damage it.

2. Safety and usage precautions

- Do not use this smoker for any purpose other than hive inspections.
- Keep out of reach of children.
- Do not pour liquid on Apisolis or immerse it in water, as this may damage the smoker.
- Do not use the appliance in environments with extreme temperatures or in very humid or extremely dusty conditions.
- Apisolis must be stored outdoors.
- Do not throw the appliance or drop it.
- Only use with Apisolis batteries.
- Take care not to damage or dirty the micro-USB port. It is required for recharging which is located under the Apisolis smoker.
- The Apisolis Smoker requires the addition of Native Solution to operate. *The Native Solution is protected by a registered patent.*

Section II : Components and functions

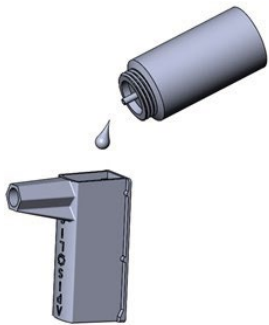
Contents of the box



No.	Component Name	Function Description
1	Smoker	Main unit composed of the bellow, and the container for the tank and electronics
2	Tank	Designed to contain the Native Solution that is vaporized through the spout as well as the sealing part and the coil
3	Coil	Designed to heat the Native Solution and convert it into steam
4	USB Cable	To recharge the Apisolis battery via the micro-USB port
5	Silicone Sealing Part	Used to seal the tank and accommodate the coil

Section III : Commissioning

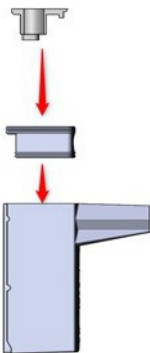
Before using this tool, please make sure to follow these steps:



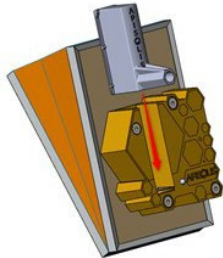
1. Filling the tank – Pour the Native Solution into the tank through the opening provided for this purpose. Warning: Fill up to the limit of the internal reinforcements of the tank (see below).



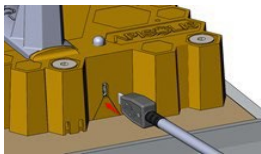
2. Preparing the Coil – When using a new Coil, it must first be soaked in the Native Solution. Avoid burning the cotton integrated into it, when switching on the Apisolis Smoker.



3. Installation of the Coil – Place the coil (previously soaked for at least 5 minutes) in the sealing part. Next put the sealing part to the tank, ensuring that the solution poured does not overflow.

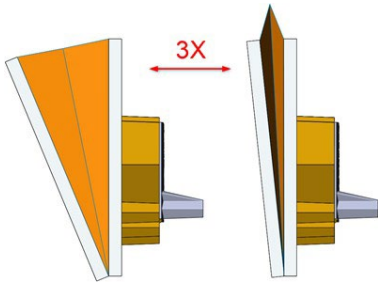


4. Installation of the tank – Insert the tank into the space provided for this purpose on the smoker, up to the stop.

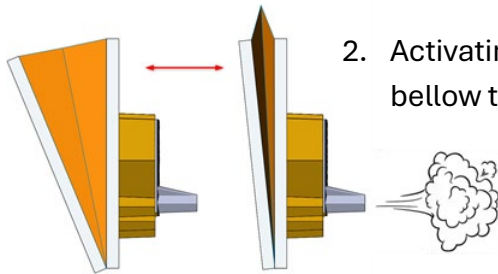


5. Recharging – Connect the USB cable, supplied in the box, to the micro-USB port placed under the smoker.

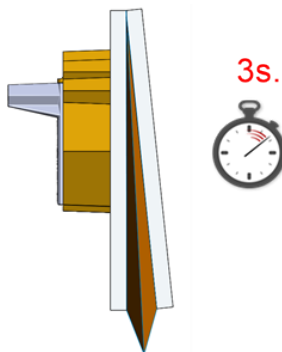
Section IV : Operation



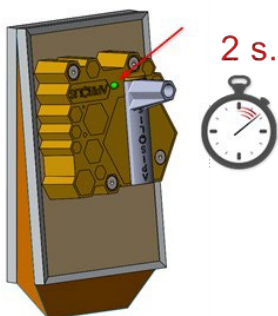
1. Starting the Apisolis Smoker – There is not an on/off switch. To start the Apisolis Smoker, squeeze and release the bellow 3 times in a vertical position with the spout down. An audible signal will sound 4 times.



2. Activating steam – Once started, squeeze and release the bellow to produce steam.



3. Turning off the smoker – To turn off the Apisolis Smoker, keep the bellow closed with the spout upward for 3 seconds. A signal will sound once.



4. Checking the battery level – Ensure the Apisolis Smoker is off. Holding the bellow closed with the spout upward for 2 seconds. The colored LED will indicate the battery level.

Red: Low battery (0-40%), remember to recharge.

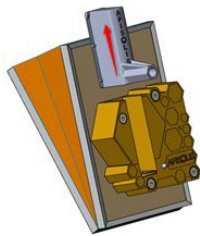
Orange: Half battery (40-80%)

Green: Battery charged (80-100%)

Section V : Maintenance

It is recommended that you complete recharging cycles during the first weeks of use to optimize battery life. Once use is complete, it is best to clean any traces of liquid from the tank and container connectors. Do not use any liquid to clean the Apisolis Smoker.

Replacing the Coil



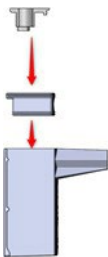
1. Remove the Smoker's tank



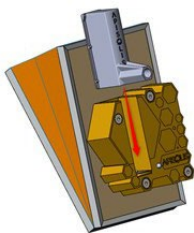
2. Take out the coil from the silicone support



3. Remove the silicone tank support



4. Soak the new coil (see section III), then place the new coil in the silicone support. The coil must be fully inserted. Place the assembly in the tank.



5. Place the tank back into the smoker. Check that there are no major leaks once the tank is in place. Note: the presence of micro leaks is normal.

Recharging the Apisolis Smoker

1. Connect the USB cable to the micro-USB port placed under the smoker.
2. Connect the other ends to a computer's USB port or a fast charge compatible USB charger (not included).
3. While charging, the LED light will flash with the indication of its charge status. It will be steady green when it is fully charged.

Guarantee: The legal guarantee of conformity and against hidden defects is 2 years. It guarantees that the product received conforms to the description of the product ordered and that there are no hidden defects. Otherwise contact customer service, sav@apisolis.com.

Section VI : Troubleshooting

CAUSE	SOLUTION
The LED is flashing red	Check that the coil in the tank is functioning and placed correctly
The Apisolis Smoker does not produce enough steam	Replace the coil
Presence of liquid under the coil	Wipe the connection pins under the coil to prevent liquid from making contact between the two
The Apisolis Smoker will not turn on	Check the batter level and recharge if necessary. If the problem persists, contact customer service.

The situations above are the faults generally observed and the operations recommended for troubleshooting. For any other malfunction, please contact customer service by email, sav@apisolis.com.