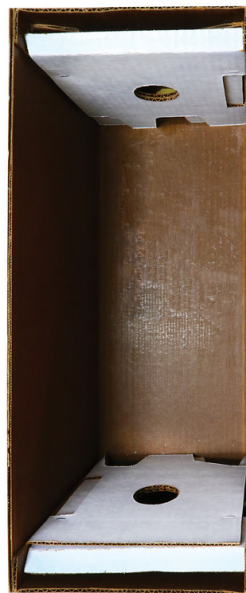
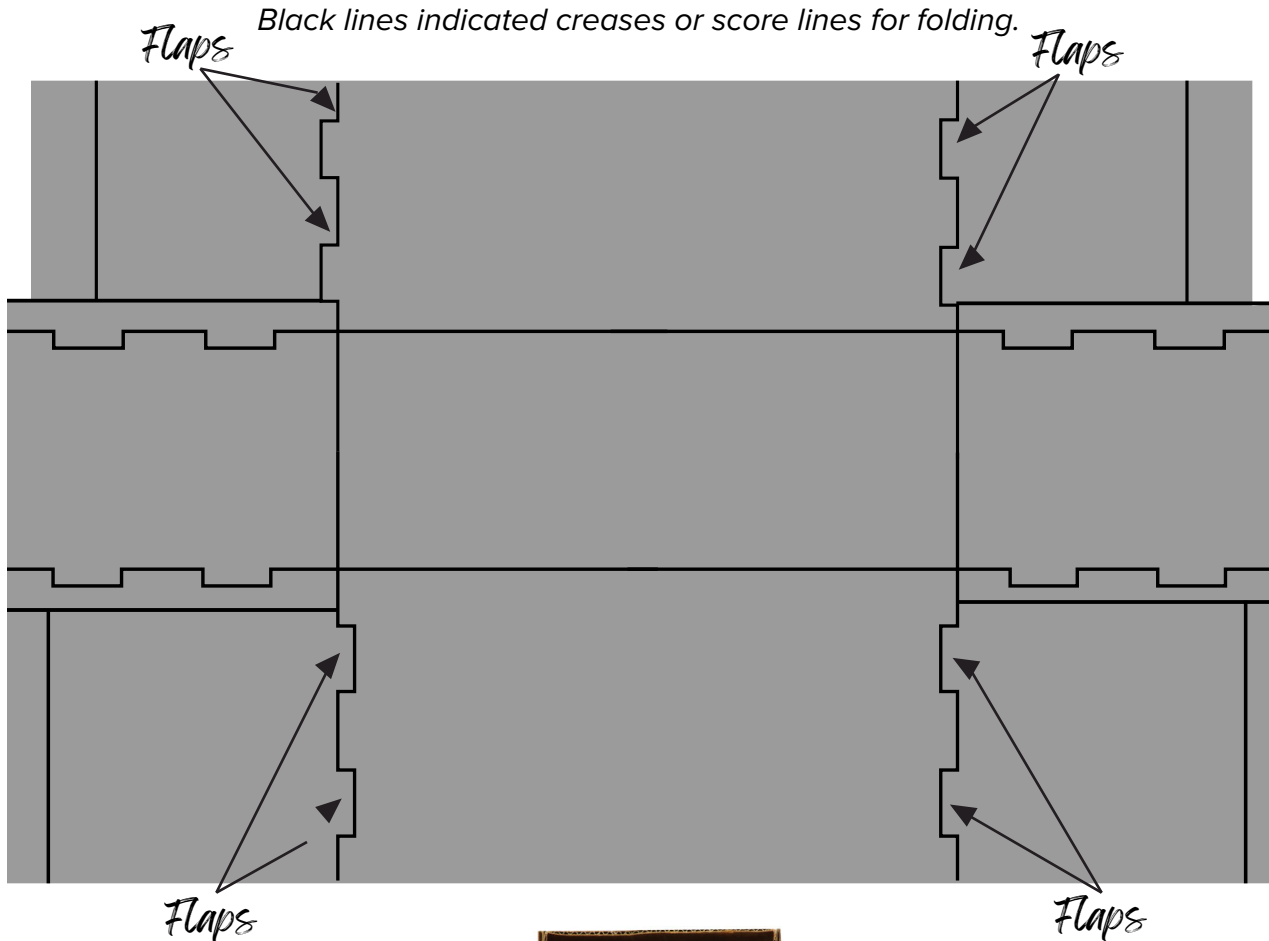


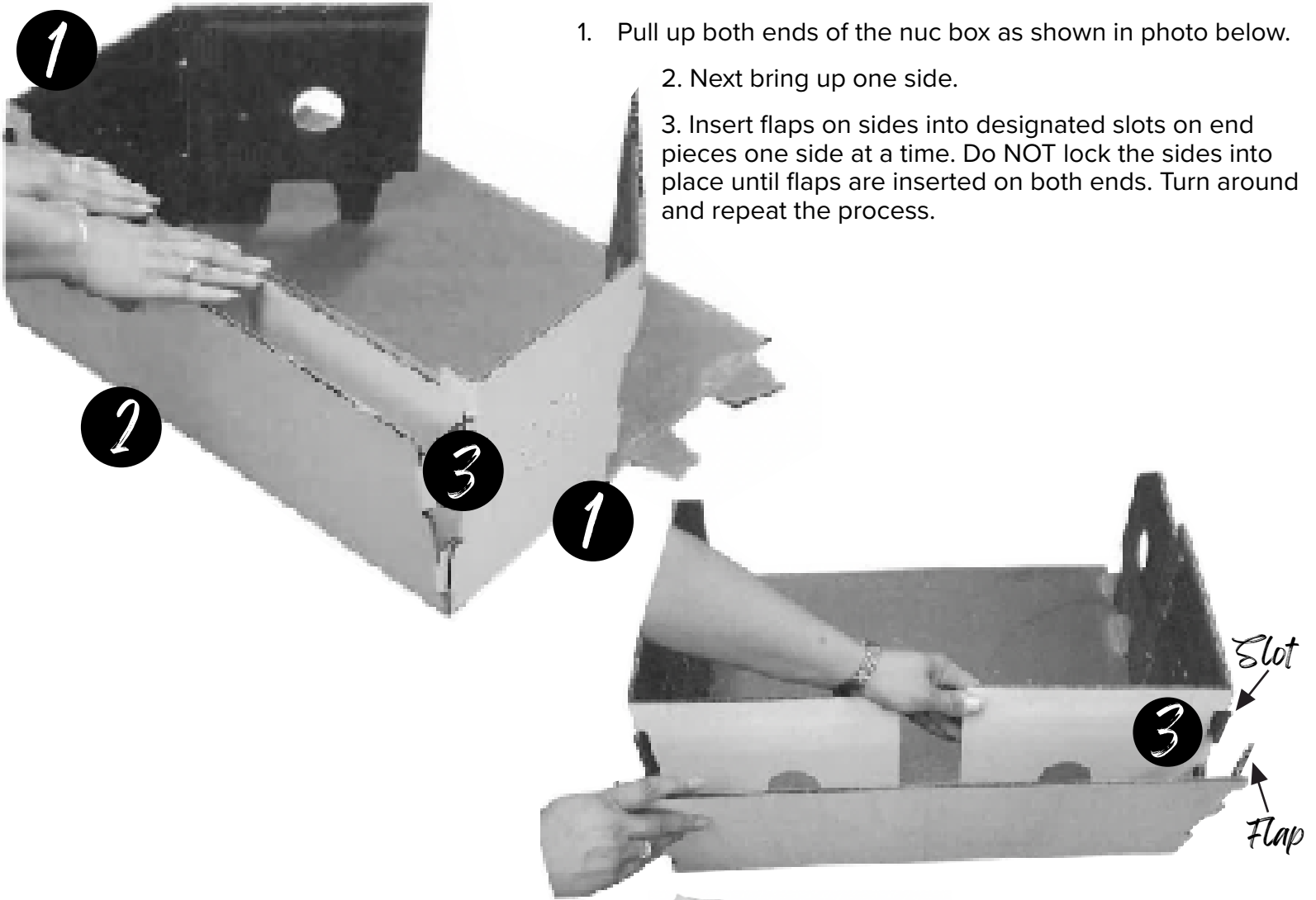
ASSEMBLING WHITE WAXED CORRUGATED CARDBOARD NUC BOX

Warning:

If you do not fold the box the appropriate way, it will tear. Start by finding the indented line side and place face up. Your nuc box should come as a flat sheet. Begin by prefolding all flaps and scores.



Notes: If you desire a screen where the ventilation holes are located, pop out ventilation holes and install prior to assembly. Screens sold separately. Screens can be attached with an adhesive or staple gun through the four access points.

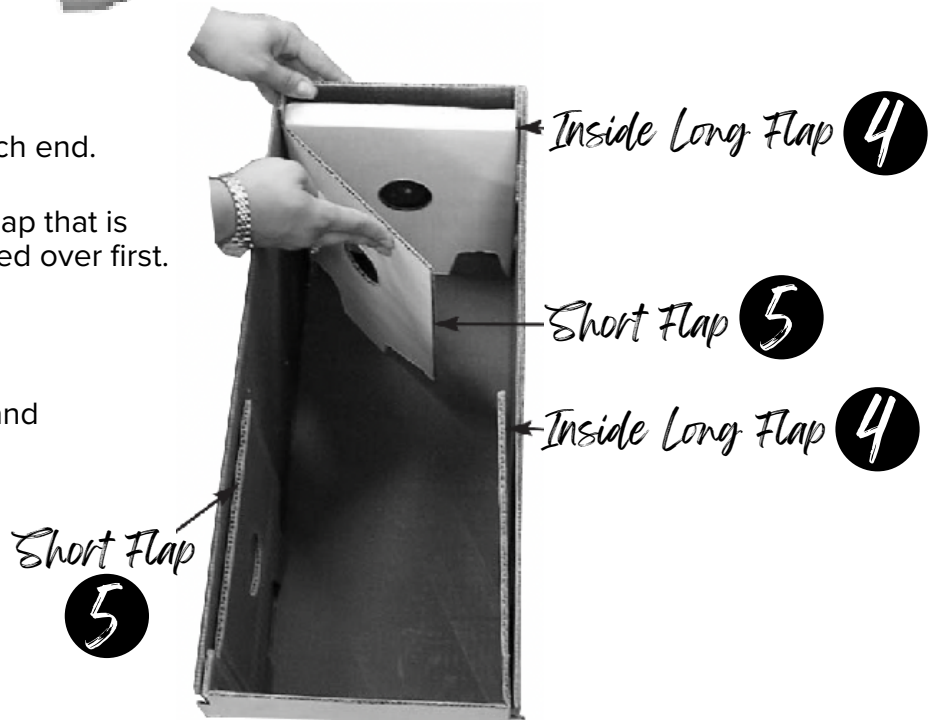


1. Pull up both ends of the nuc box as shown in photo below.
2. Next bring up one side.
3. Insert flaps on sides into designated slots on end pieces one side at a time. Do NOT lock the sides into place until flaps are inserted on both ends. Turn around and repeat the process.

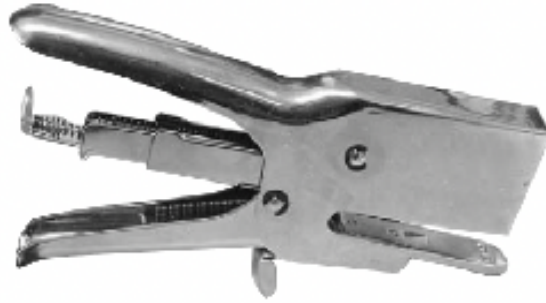
There are two sets of inside flaps on each end.

4. Start on one end and find the inside flap that is longer. The longer flap needs to be folded over first.

5. The shorter flap folds in second as demonstrated in the photo on the right. After folding one end, turn box around and repeat the process on the other end.

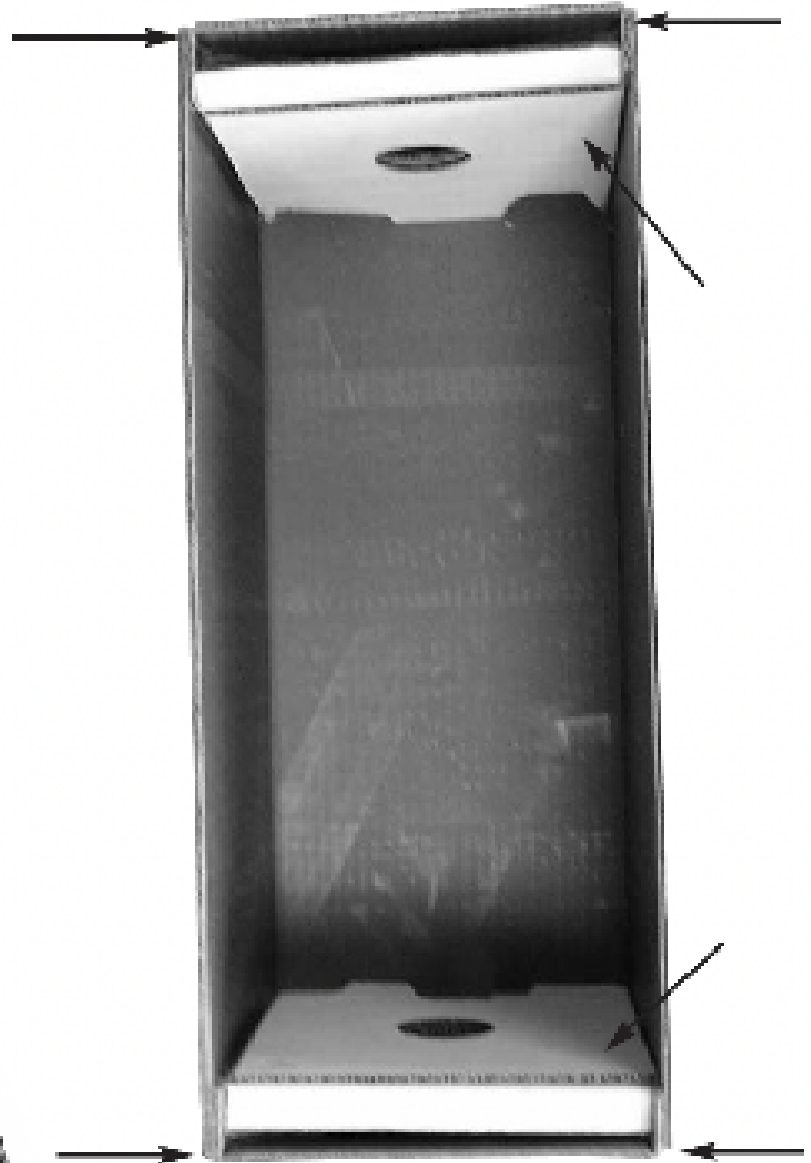
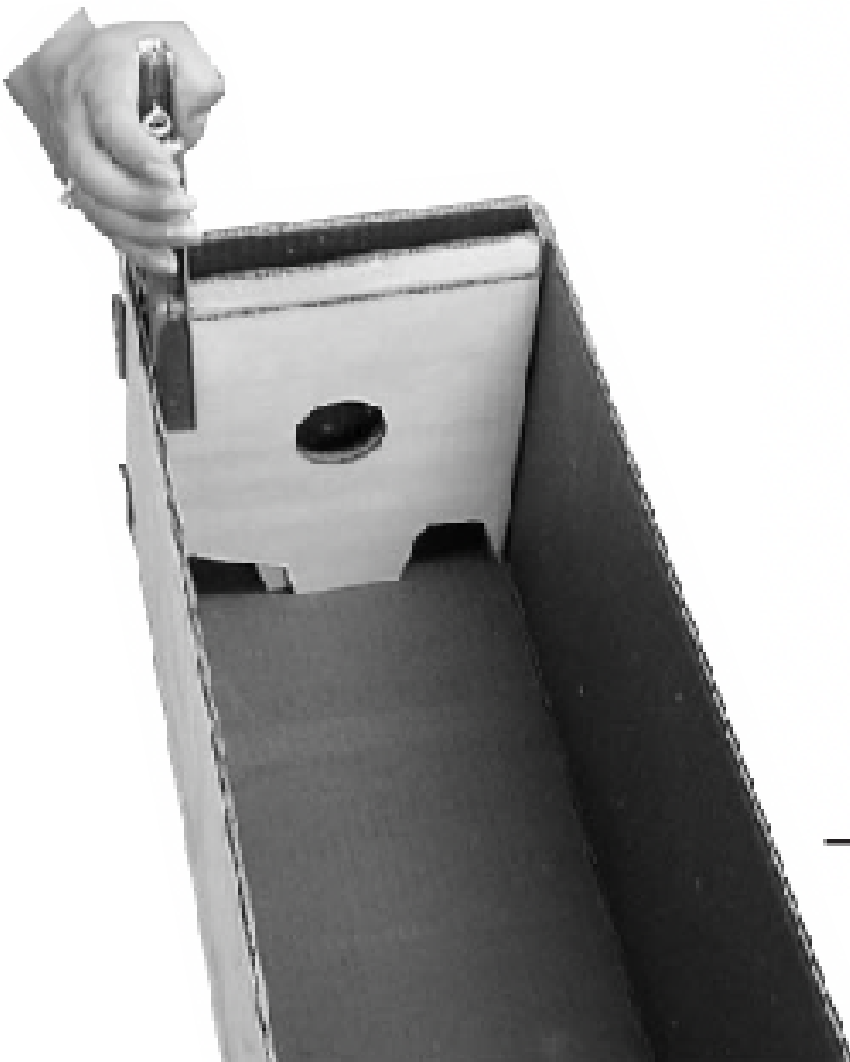


The type of stapler you will need to finish your nuc box is pictured to the right.



Riteway Stapler
HD280
Staples HD182
Sold Separately

Each nuc box will require 6 staples. Staple the attached inside flap at the outside edge. You will need one staple for each end. Just staple the flaps together; do NOT staple the flaps to the outside of the box.



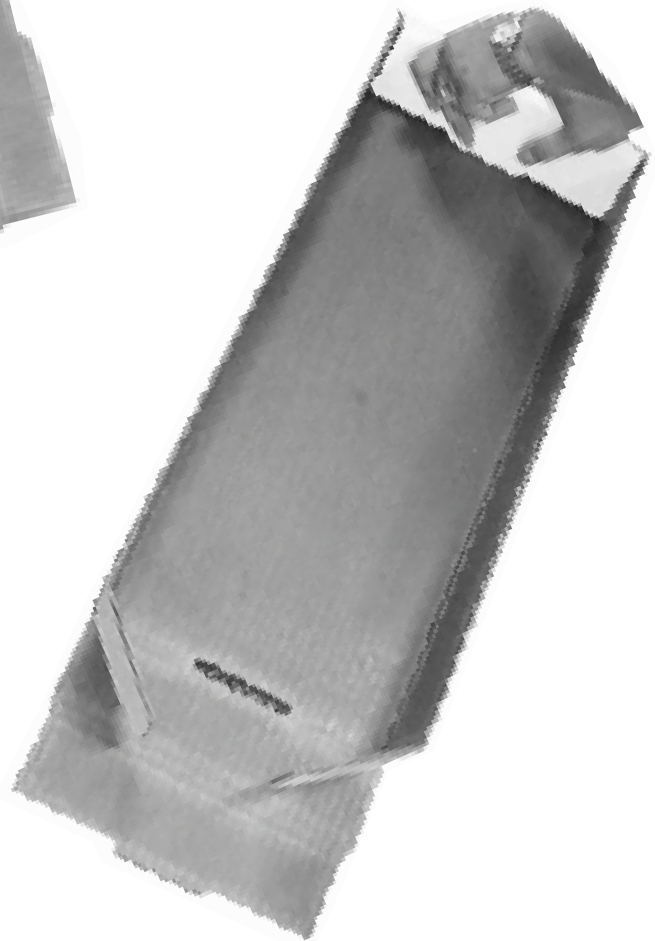
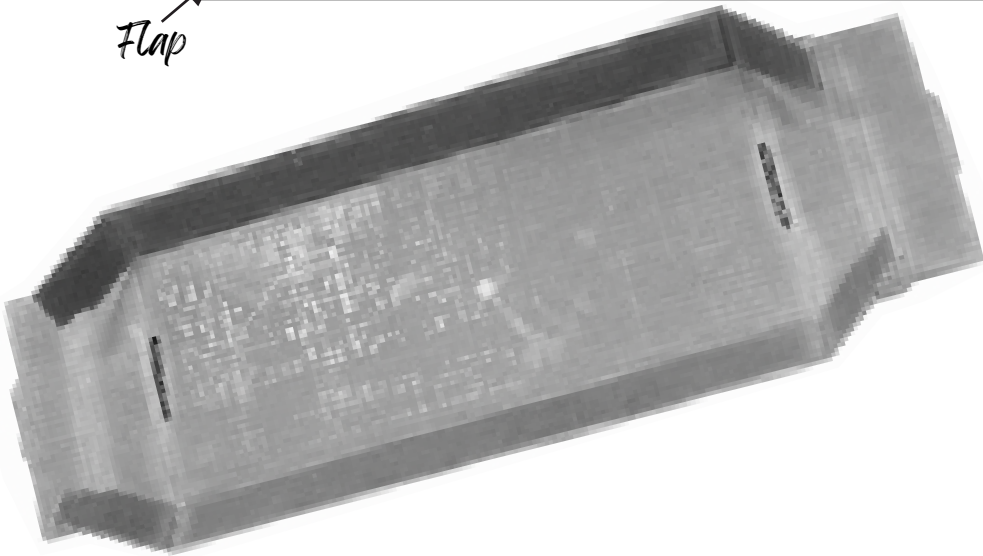
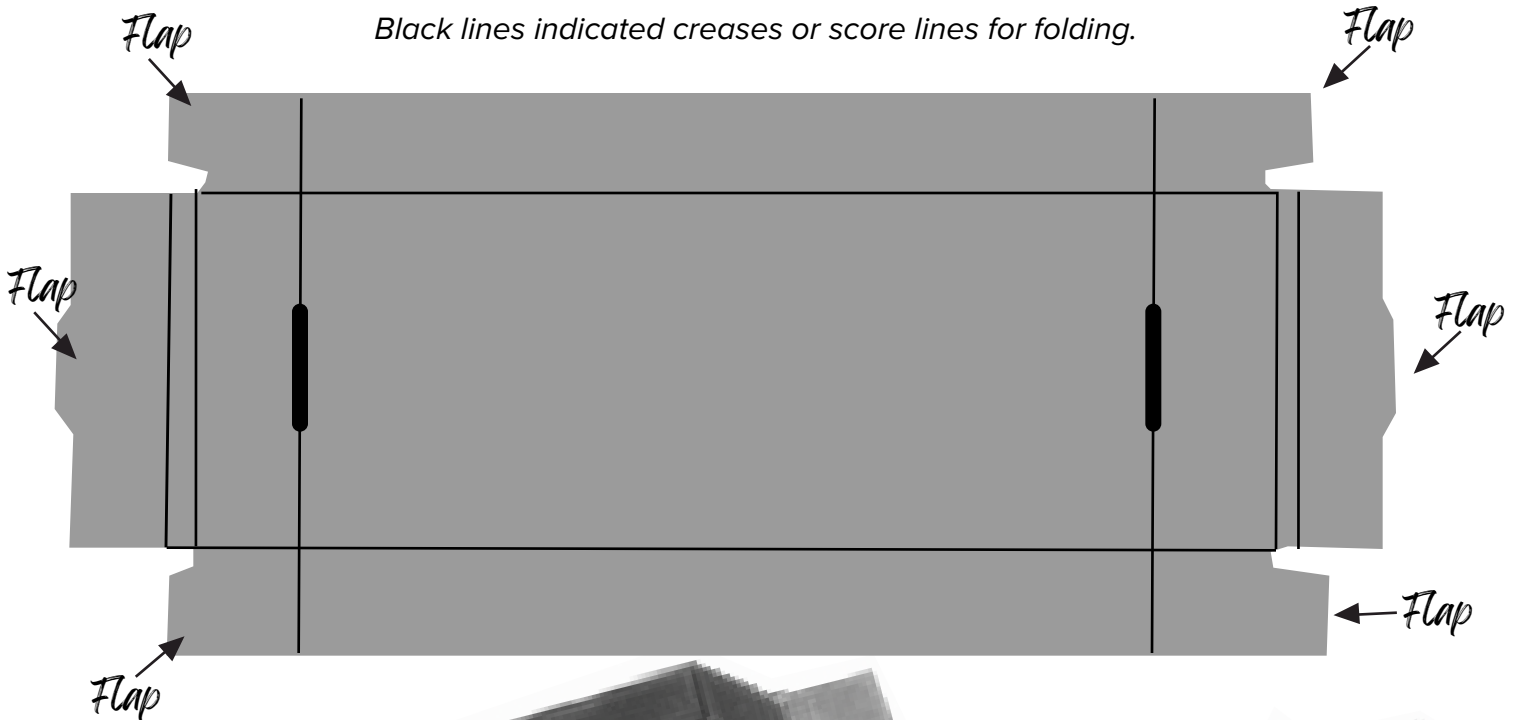
Arrow indicates staple placement.

Each corner will require 1 staple.

Attach a staple to the top outside corner in the gap on the end of the box.

Warning: If you do not fold the lid the appropriate way, it will tear.

Start by folding up both sides of the cover as seen in photo below. Fold flaps on side like photo on right. Your nuc box lid comes as a flat sheet. Begin by prefolding all flaps and scores.



Start on one end. Fold sides up and side flaps in. Fold end flap over the side flaps, inserting the tongue through the slot on the lid. Repeat the process on the other end of the lid.

Staples are not required for securing the lid flaps.