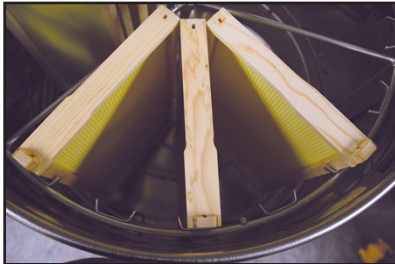


18/9 Frame Radial Hand Crank EXTRACTOR



Holds 9 - 9⁷/₈"
(23.18 cm) Frames



Holds 18 - 6¹/₄"
(15.88 cm) Frames



Holds 18 - 5³/₈" (13.65
cm) Frames



HH-170

MANN LAKE
WE KNOW BEES

501 1st St S, Hackensack, MN 56452
500 Santa Anita Dr., Woodland, CA 95776
485 Stewart Rd, Wilkes-Barre, PA 18706
1600 Commerce Street, Marshall, TX 75672

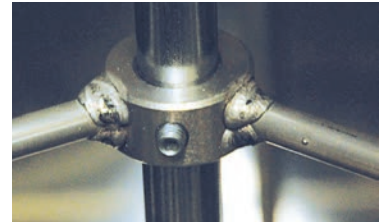
Telephone: 800-880-7694
www.mannlakeltd.com

Congratulations on your new extractor. If you have difficulty with using your new extractor or if you have any questions at all, please feel free to contact your nearest Mann Lake location. Experienced help is only a phone call away.

For added stability, we recommend bolting the extractor to a 4'x4' (121.92cm x 121.92cm) piece of plywood using the pre-drilled holes in each of the legs.

Frames should be uncapped prior to extracting. Make sure your load is balanced in the extractor and that your honey gate remains open during extraction. Your extractor is not meant to be a storage tank. Promptly move any honey to a storage container or bottling tank. You need to begin extracting at a slower speed to help balance the load and lessen the chance of blowouts of natural wax foundation before turning the crank at a higher speed.


The basket is supported by allen screws located along the shaft at the top and bottom of the basket. Be sure to tighten these screws prior to using. If at any time the shaft spins but the basket does not, you will need to tighten them again.



Keep your honey gate open when extracting to ensure the basket moves freely. Your extractor is not intended to be a storage tank. Promptly move any honey to a storage container or bottling tank.



Each leg is pre drilled for easy mounting
Height from floor to honey gate is 14" (35.56cm)

 **TIP** Place a 5 gallon pail with a honey gate and double sieve under your extractor to filter your honey as you extract! You can bottle from the pail too!

One Year Limited Warranty: Mann Lake warrants this product, to original purchaser, for one year from purchase date to be free of defects in materials and workmanship. This warranty is the only written or express warranty given by Mann Lake ALL IMPLIED WARRANTIES OF MERCHANTABILITY AND OF FITNESS ARE HEREBY EXCLUDED. Mann Lake's obligation under this warranty is limited to repair or replacement of the product, at its option. IN NO CASE SHALL MANN LAKE BE LIABLE FOR ANY INCIDENTAL OR CONSEQUENTIAL DAMAGES FROM BREACH OF THIS WARRANTY.

HH-170 18/9 Frame Hand Crank Extractor

PARTS LIST

| PART # | DESCRIPTION | QUANTITY | ✓ |
|--------|--------------------------------------|----------|---|
| | Handle For Top Crank | 1 | |
| 80-001 | Large Oval Mann Lake Label | 1 | |
| 36-123 | 6 MM Allen Wrench | 1 | |
| 36-122 | 3 MM Allen Wrench | 1 | |
| | Instruction Sheet | 1 | |
| | New Part List | 1 | |
| | Lid With****Caution Label On Lid**** | 1 | |

INSPECTED BY- _____

18/9 Frame Radial Hand Crank Extractor

REPLACEMENT PARTS LIST

| PART # | DESCRIPTION |
|--------|-------------------|
| HH-195 | ½ Lid Replacement |
| HH-810 | Replacement Hinge |
| HH-606 | Honey Gate |

Cleaning Instructions

Wash all equipment before use. To clean extractors, use warm to hot water with a soft cloth. Please do not use anything rough and abrasive on extractor. If the extractor is still not clean you may use a small amount of dish soap. There is no need to disassemble the extractor while cleaning it. If you feel the need to disassemble the extractor please be aware of the small ball bearing on the bottom of the extractor.

Bottom of Barrel
(inside) Ball Bearing
The Shaft sits on Ball

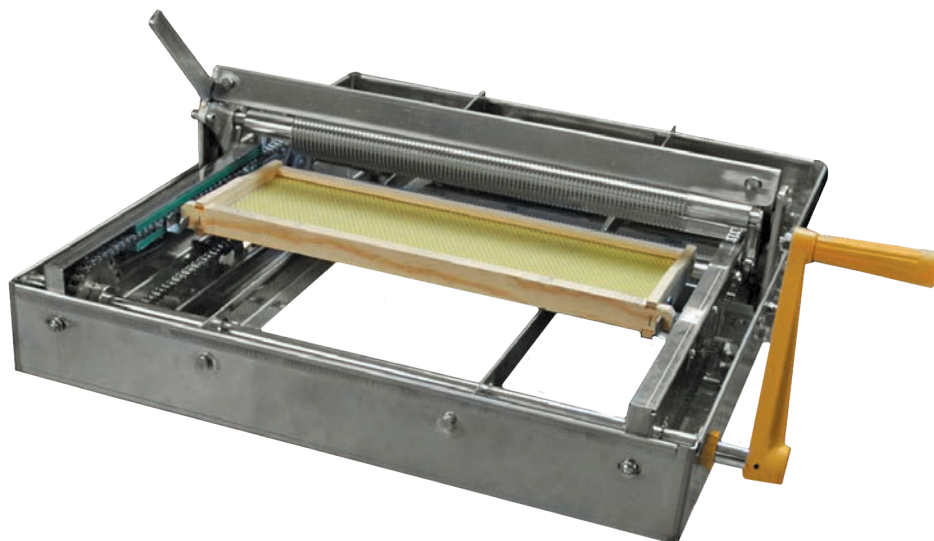


You May Also Consider

Harness the Power
of the Sun!



HH-185 Solar Wax Melter



HH-226 Sideliner Uncapper