

Deluxe 6/3 Frame Side Crank EXTRACTOR

HH-190



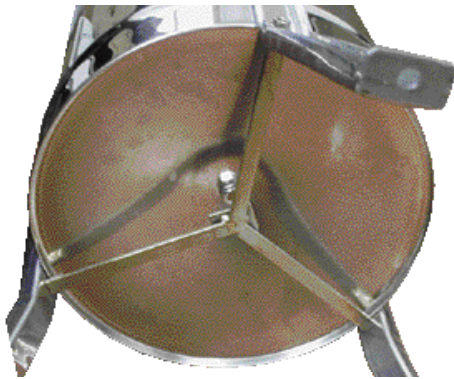
MANN LAKE
WE KNOW BEES

501 1st St S, Hackensack, MN 56452
500 Santa Anita Dr., Woodland, CA 95776
485 Stewart Rd, Wilkes-Barre, PA 18706
1600 Commerce Street, Marshall, TX 75672

Telephone: 800-880-7694
www.mannlakeltd.com

Congratulations on purchasing your new extractor. Shown below are just a few things you need to do before you begin extracting. If you have difficulty with assembly or if you have any questions at all, please feel free to contact your nearest Mann Lake location.

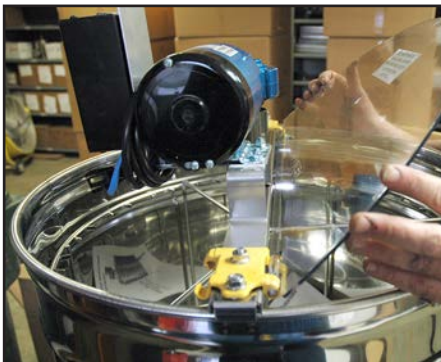
To attach the crank to the handle, place the hex bolt into the wide end of the handle and slightly tighten with the allen wrench that has been provided. Once the bolt is secure, place the nut over the exposed threaded end and tighten with an adjustable wrench. You want the handle to spin freely.



Attach the legs to the top of the extractor can with the nuts that are provided and tighten with an adjustable wrench. Lay the extractor on its side and attach the leg support to each of the legs with the nuts that are provided. The "feet" of the extractor legs have a hole that can be used to mount the extractor for stability. We suggest mounting to a 4'x4' (121.92 cm x 121.92 cm) piece of plywood.

When you put the lid on the extractor you must be able to read the embedded writing on the lid (or warning label if applied). **STEP 1** - Hold the lid at a 45° angle. **STEP 2** - Place the plastic tees down on the right sides of the hinge. **STEP 3** - Slide to the left so that the left side of the tee goes in the secured bracket. Once it is secured you should be able to lay the lid down.

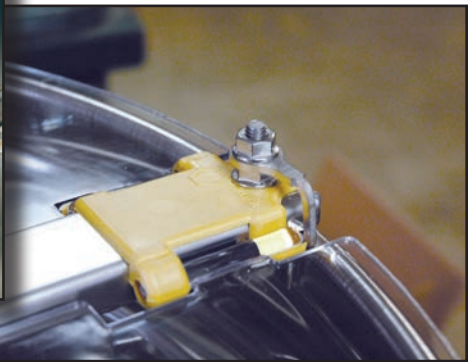
CAUTION: While the lid is down, the clear plastic should not overlap any part of the yellow hinge on either side.



STEP 1



STEP 2

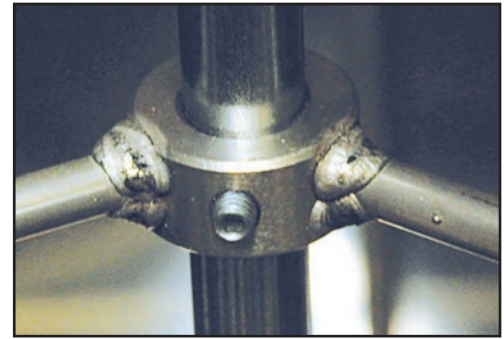


STEP 3



CAUTION

Finally, the basket is supported by allen screws located along the shaft at the top and bottom of the basket. Be sure to tighten these screws prior to using. If at any time the shaft spins but the basket does not, you will need to tighten them again.



Extracting

Frames should be uncapped prior to extracting. When extracting $9\frac{1}{8}$ " (23.18cm) frames or $6\frac{1}{4}$ " (15.88cm) frames with wax foundation, the frames will need to be rotated during extraction. Extract side one approximately 50%, turn the frame to side 2 and extract 100% , then return to side one and extract the remaining 50%. Rotating the frame will lessen the occurrence of blowouts in the foundation from the weight of the honey. If plastic foundation is used, it is possible to extract each side 100% before turning. $5\frac{3}{8}$ " (13.65cm) frames are placed radially as shown below. It is not necessary to turn frames placed radially. Keep your honey gate open when extracting to ensure the basket moves freely. Your extractor is not intended to be a storage tank. Promptly move any honey to a storage container or bottling tank.



Holds 3
 $9\frac{1}{8}$ " (23.18 cm)
Frames



Holds 3
 $6\frac{1}{4}$ " (15.88 cm)
Frames



Holds 6
 $5\frac{3}{8}$ " (13.65 cm)
Frames

Cleaning Instructions

Wash all equipment before use. To clean extractors, use warm to hot water with a soft cloth. Please do not use anything rough and abrasive on extractor. If the extractor is still not clean you may use a small amount of dish soap. There is no need to disassemble the extractor while cleaning it. If you feel the need to disassemble the extractor please be aware of the small ball bearing on the bottom of the extractor.

Bottom of Barrel
(inside) Ball Bearing
The Shaft sits on Ball



HH-190 6/3 Frame Side Crank Extractor



PART LIST

PART	IN	ON	PACKED SEPARATELY OR FOAM
1- Stainless Steel Drum with 3 Bolts for Legs		X	
1- 6/3 Frame Welded Metal Basket	X		
1- Handle	X		
1- Gear Box		X	
1- Crank		X	
1- Bolt For Handle	X		
2- 1/2 Circle Plexiglas Lid with ***Caution Label***			X
HH-810 2- Hinges		X	
4- Flang Nuts 8mm For Hinges		X	
4- Bolts Metric 8x20 For Hinges		X	
HH-606 1- Honey Gate		X	
3- Legs			X
Tripod For Legs			X
6- Nuts For The Bolts To Attach Legs	X		
36-123 6 MM Allen Wrench	X		
80-001 Large Oval Mann Lake Label		X	
36-122 3 MM Allen Wrench	X		
Instruction Sheet	X		
INSPECTED BY- _____			

One Year Limited Warranty: Mann Lake warrants this product, to original purchaser, for one year from purchase date to be free of defects in materials and workmanship. This warranty is the only written or express warranty given by Mann Lake ALL IMPLIED WARRANTIES OF MERCHANTABILITY AND OF FITNESS ARE HEREBY EXCLUDED. Mann Lake's obligation under this warranty is limited to repair or replacement of the product, at its option. IN NO CASE SHALL MANN LAKE BE LIABLE FOR ANY INCIDENTAL OR CONSEQUENTIAL DAMAGES FROM BREACH OF THIS WARRANTY.